



Office and Postal address:
C/- Waiora Clinic
Level 2
435 Malvern Road
South Yarra VIC 3141

Tel: (03) 9076 4713
Convenor: Judi 0425 723 476

Email: isfaf@alfred.org.au
Website: <http://www.ispaf.org/>

Monthly Support Group Meeting Mental Health Week

7.30 pm Tuesday 10 October 2017

ANNUAL GENERAL MEETING

GUEST SPEAKER

PROFESSOR JAYASHRI KULKARNI

'Research at MAPrc'

The research at MAPrc is recognized internationally as ground-breaking. Professor Kulkarni is internationally recognized as a leader in the area of women's mental health.

MultiPurpose Room, Betty Day Centre, 67 Argyle Street, St Kilda

access via carpark in Bath St (off Inkerman St) or via southern end of path from Argyle St

All welcome, no need to book Light supper available from 7.15 pm

No charge, but a gold coin donation towards supper is always appreciated

No need to RSVP but please come early, especially if coming for the first time

FOR IMPORTANT DATES FOR YOUR DIARY, PLEASE TURN OVER

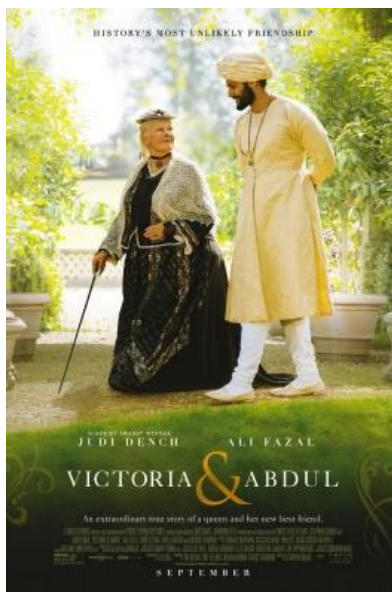
**ISFAF
LUNCH AND FILM
AFTERNOON
PALACE COMO
SATURDAY 21
OCTOBER**

BOOKINGS ESSENTIAL:
via ISFAF office: 9076 4713
or email isfaf@alfred.org.au

**Time: TBA approx. 1 pm with
film to follow**

**Cost: \$5 pensioners, \$10
nonPensioners.**

Please bring pension card



**Victoria and Abdul, stars the
wonderful Judi Dench.**

**Those who have been to our film
afternoons know that the lunch
which is included in the price of
your movie ticket is always delicious
and that many longstanding close
friendships have commenced at
ISFAF Film Afternoons
\$5 Pensioners \$10 nonPensioners
incl. film and lunch**

**We thank Carers Vic for their
generous subsidy that makes these
low prices possible.**

**Parking is very reasonably priced at
the Como if you get your parking
ticket validated at the box office.**

The Alfred have a new Suicide Prevention team called HOPE.

There seems to be ongoing confusion about the team names and acronyms for Consultation Liaison & Emergency Psychiatry (CLE) which then leads to confusion. Correct names are below:

Program: Consultation Liaison & Emergency Psychiatry (CLE)

Teams:

- CL** – Consultation Liaison service
- EPS** – Emergency Psychiatry Service (within the Emergency Department)
- CATT** – Crisis Assessment Team
- PACER** - Police and CATT Early Response
- Hope** – Suicide Prevention Assertive Outreach
- Triage** – MH Telephone Triage

- **City of Phillip Social Inclusion 2017, Live Well Multicultural Seniors Wellness Program**
Tuesdays 12 September-12 December, Cora Graves, 38 Blessington Street, St Kilda telephone 9209 6738. Cost \$14.65 per week

Tuesday November 14	Associate Prof Simon Stafrace, Director, Alfred Psychiatric Services - the service, current changes and plans for future improvement.
Tuesday December 12	End of Year Dinner -venue tba.,