



**Office and Postal address:**

C/- Waiora Clinic  
Level 2  
435 Malvern Road  
South Yarra VIC 3141

Tel: (03) 9076 4713  
Convenor: Judi 0425 723 476

Email: [isfaf@alfred.org.au](mailto:isfaf@alfred.org.au)  
Website: <http://www.ispaf.org/>

## Monthly Support Group Meeting

7.30 pm Tuesday 8 August 2017

**MultiPurpose Room, Betty Day Centre, 67 Argyle Street, St Kilda**  
access via carpark at end of Bath St (off Inkerman St) or via southern end of path from Argyle St

# ***The Hon. Emma Kealy, MP***

**Shadow Minister for Mental Health**  
**Shadow Minister for Senior Victorians**  
**Shadow Minister for Consumer Affairs**

The Shadow Minister has a degree in Biomedical Science and has been CEO of a major hospital.  
She will speak from her background at the coalface of health care  
and is keen to hear your views and concerns about the challenges of being a carer and the challenges associated with mental health care. This is your opportunity to be heard and for your opinion to matter

Your input is valuable – this is your chance to be heard  
by the powers that assist in providing the services we need.  
Collingwood supporters especially welcome to mingle and help the  
Shadow Minister realize that she is among friends

All welcome, no need to book Light supper available from 7.15 pm

No charge, but a gold coin donation towards supper is always appreciated

No need to RSVP but please come early, especially if coming for the first time  
If having trouble finding the Betty Day Centre please call Judi on 0425 723 746

**FOR IMPORTANT DATES FOR YOUR DIARY, PLEASE TURN OVER**

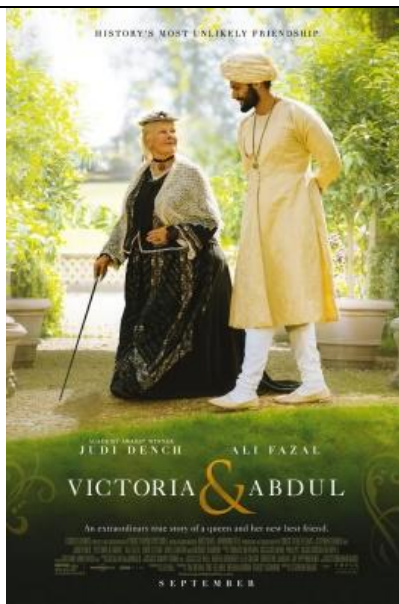
**CARERS FILM  
AFTERNOON**

**PALACE COMO  
SATURDAY 21 OCTOBER**

**BOOKINGS ESSENTIAL:** via  
ISFAF office: 9076 4713 or  
email [isfaf@alfred.org.au](mailto:isfaf@alfred.org.au)

**Time:** TBA – usually lunch at  
approx. 1 pm with film to  
follow.

**Cost:** TBA subject to subsidy



The much awaited film, Victoria and Abdul, starring the wonderful Judi Dench, is due for release shortly. Those who have been to our film afternoons know that the lunch which is included in the price of your movie ticket is always delicious and that many longstanding close friendships have commenced at ISFAF Film Afternoons

***VicServ: Special event with Simon Duffy (Centre for Welfare Reform UK)  
Creating citizen-based community and support services***

**How can organisations implement control and choice?  
How can participants collaborate and maximise outcomes of control and choice?  
How can our community services transform to a new service delivery model?**

Wednesday 23 August 2017 - 9.30am - 2.00pm (includes lunch) Cost for Carers: \$25  
Victoria University Conference Centre, 300 Flinders St, Melb (venue is accessible for people with disabilities)

Register at:

<http://vicservdb.connexionpoint.com.au/mod/EventMgt/EMAdminRegistrationForm1Web.cgi?EmEventID=144>

Tuesday September 12	<b>Michael McGartland</b> , Principal Clinical. Psychologist, Community Programmes, Alfred Psychiatry
Saturday October 21	<b>Carers Week Event-</b> Lunch and Film at Palace Como: Victoria and Abdul
Tuesday October 10	<b>AGM,</b> <b>Prof. Jayashri Kulkarni</b> , Dir, Monash Alfred Psychiatry Research Centre (MAPrc)
Tuesday November 14	<b>Associate Prof Simon Stafrace, Director, Alfred Psychiatric Services</b> - the service, current changes and plans for future improvement.
Tuesday December 12	<b>End of Year Dinner</b> -venue tba,.

- **The Supper Club, 6-8pm second Tuesday of the month** is a support group for families who have lost a loved one as a result of substance use. For further information please call the family Drug Helpline 1300 660 068.
- **City of Phillip Social Inclusion 2017, Live Well Multicultural Seniors Wellness Program Tuesdays 12 September-12 December**, Cora Graves, 38 Blessington Street, St Kilda telephone 9209 6738. Cost \$14.65 per week.
- **City of Port Phillip free Home Library Service** for eligible residents who are unable to come to the library. For information contact the Home Library Service staff on 9209 6652.



**New MH Carer Support & Referral Service**